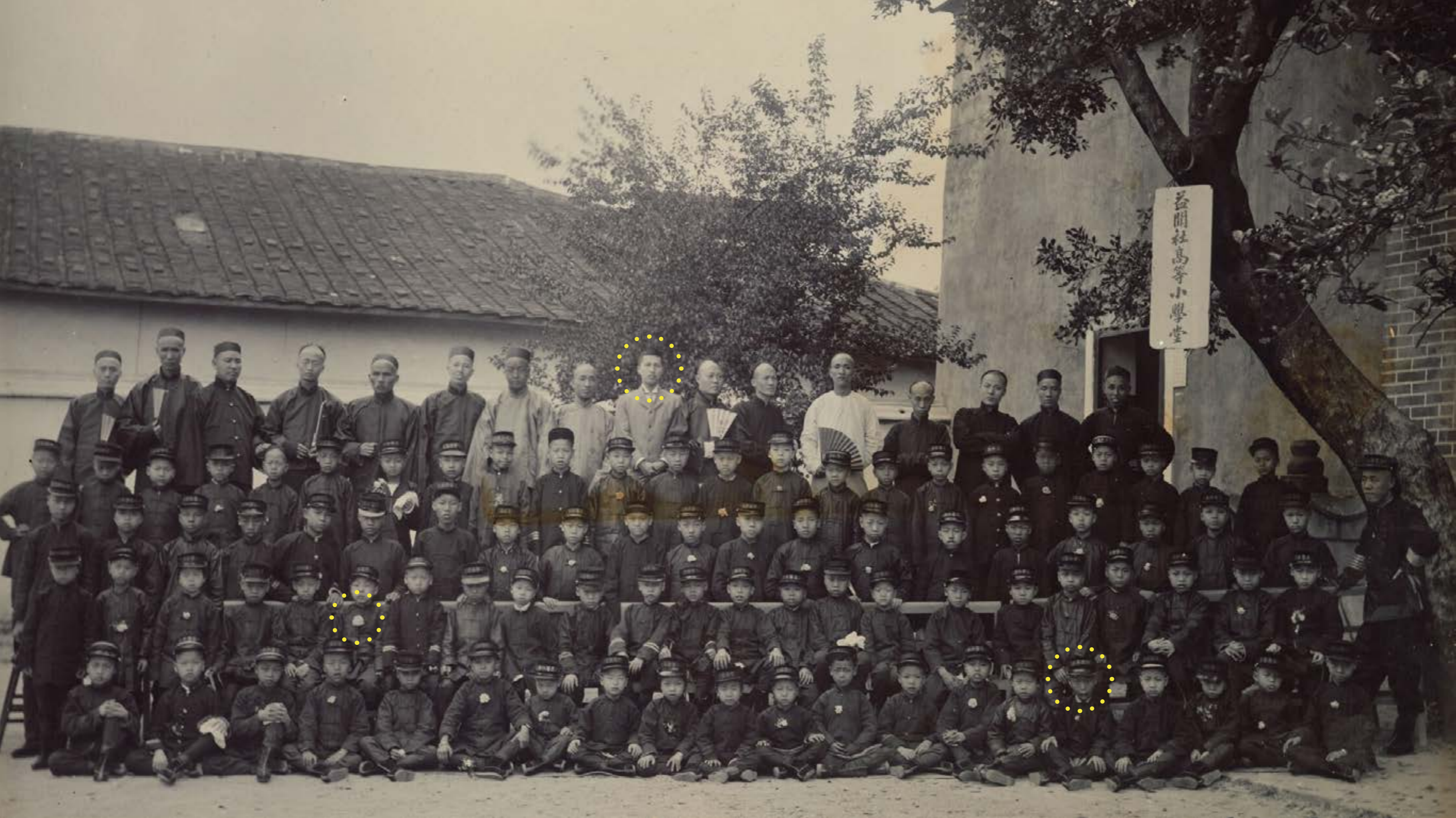


Uniform and Otherness

Schooling became a way to manage social differences in multicultural populations, and class photos could support that effort by emphasizing uniformity and minimizing disparities. School photos enable the creation of national and imperial subjects, but they can also create “others.”

Marianne Hirsch in an interview with *Columbia News*



益開社高等小學堂



益聞社高等小學堂



Flower:
Student who graduate with distinction



Suit:
Western educated, a higher social status, influencer



Fan:
Academically accomplished teacher



Ugly face:
Social disrupter, untameable

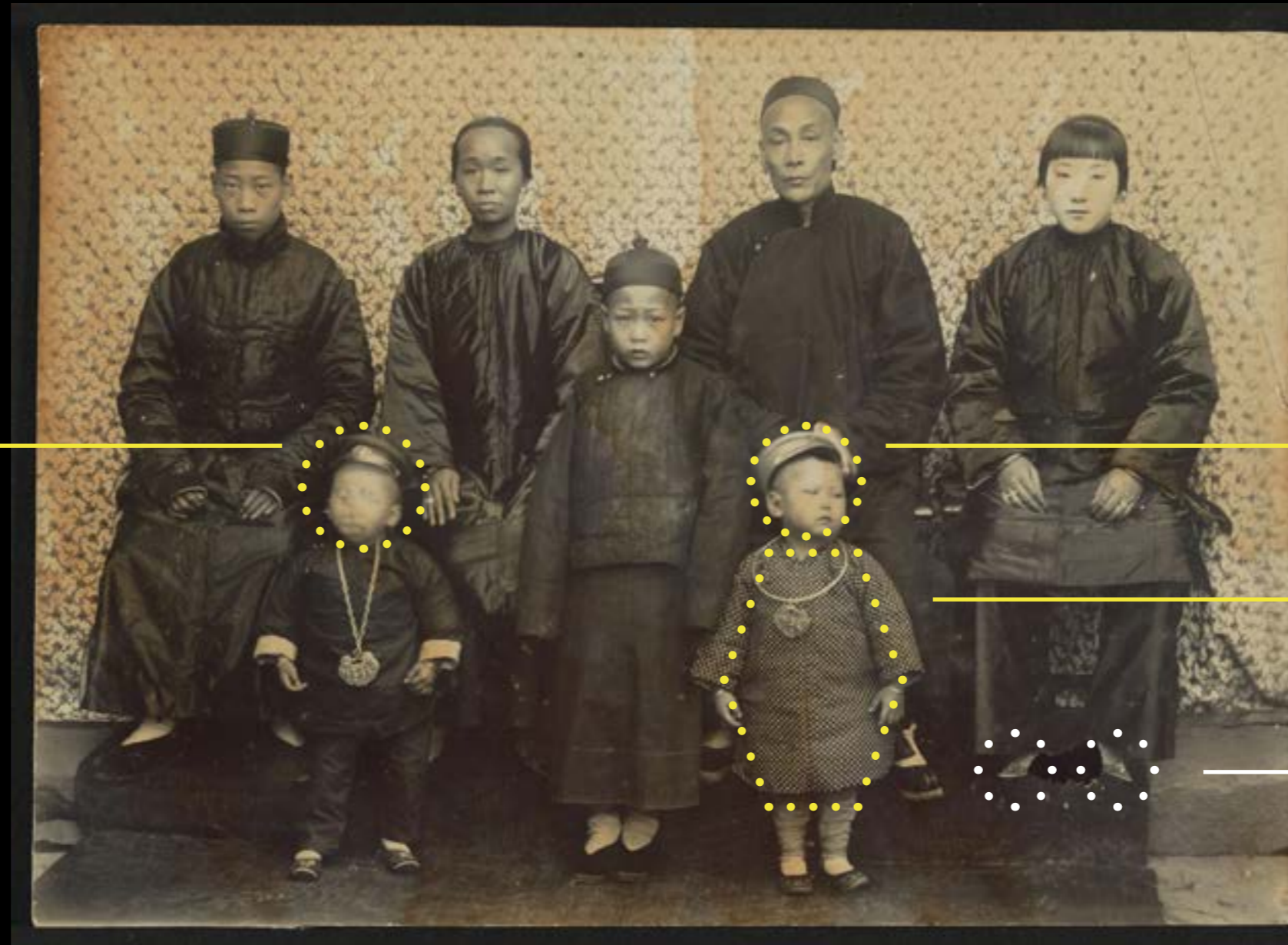


Newspaper:
Academically accomplished teacher



Sword:
Protector, managing any disrupter

Western hat



Western hats

Western fabric

footbinding

This was one of the repeated interactions between imperial powers and the populations that they sought to control: The dominant power decided that everything had to be seen and cataloged, a task for which photography was perfectly suited. Under the giant umbrella of colonialism, nothing would be allowed to remain hidden from the imperial authorities.

Teju Cole (2019)







東周禮正經營新政且

入秋後從密通強







Scale of horror



Scale of scepticism



林慶瀾公司護網江兩小輪在外海拿獲拐匪二十三名
被拐男女小孩共計四十一名今處寄養招屬取領



A group of nine children, likely of Chinese descent, are posed in front of a traditional wooden door with lattice work. They are arranged in two rows: four children in the back and five in the front. All are wearing traditional Chinese clothing, including jackets and hats. Each child is holding a small, rectangular sign with Chinese characters written on it. The characters on the signs, from left to right in the front row, are: '何八弟' (He Badi), '謝橋亭' (Xie Qiaoting), '何永太' (He Yongtai), and '沈仕森' (Shen Shisen). The child in the back row on the far right holds a sign that says '林瑞錄' (Lin Ruilu). The other signs are partially obscured or less legible. The photograph has a warm, aged tone.

[illegible]

十餘傳世紀又入春秋縱密通強

光緒二十五年五月...

數千里遠運獨秉周禮正經營新政且合司儀堂

光緒二十五年五月...

五洲萬國若

四海

洋務局分員 高慶銓

洋稅委員 精其先

鹽法道 鹿學良

洋務局文書 徐際可

洋務局文書 方尚義

閩縣 舒鈞

候補知縣 胡之楨

洋務局文書 高煥

英王 桐

法林 藩

船政提調 馬

福州府 呂渭英

福州府 張文治

布政使司 周蓮

按察使司 朱其燠

會同武備學堂 章景楓

華崇善





葉可標

徐際可

羅汝澤

呂渭英

蘇貞洪

陳燦華

黃遵楷

林蕃

高煥

王純

孫傳霖

玉貴

鹿學良

周蓮

朱其煊

啓約

恩均

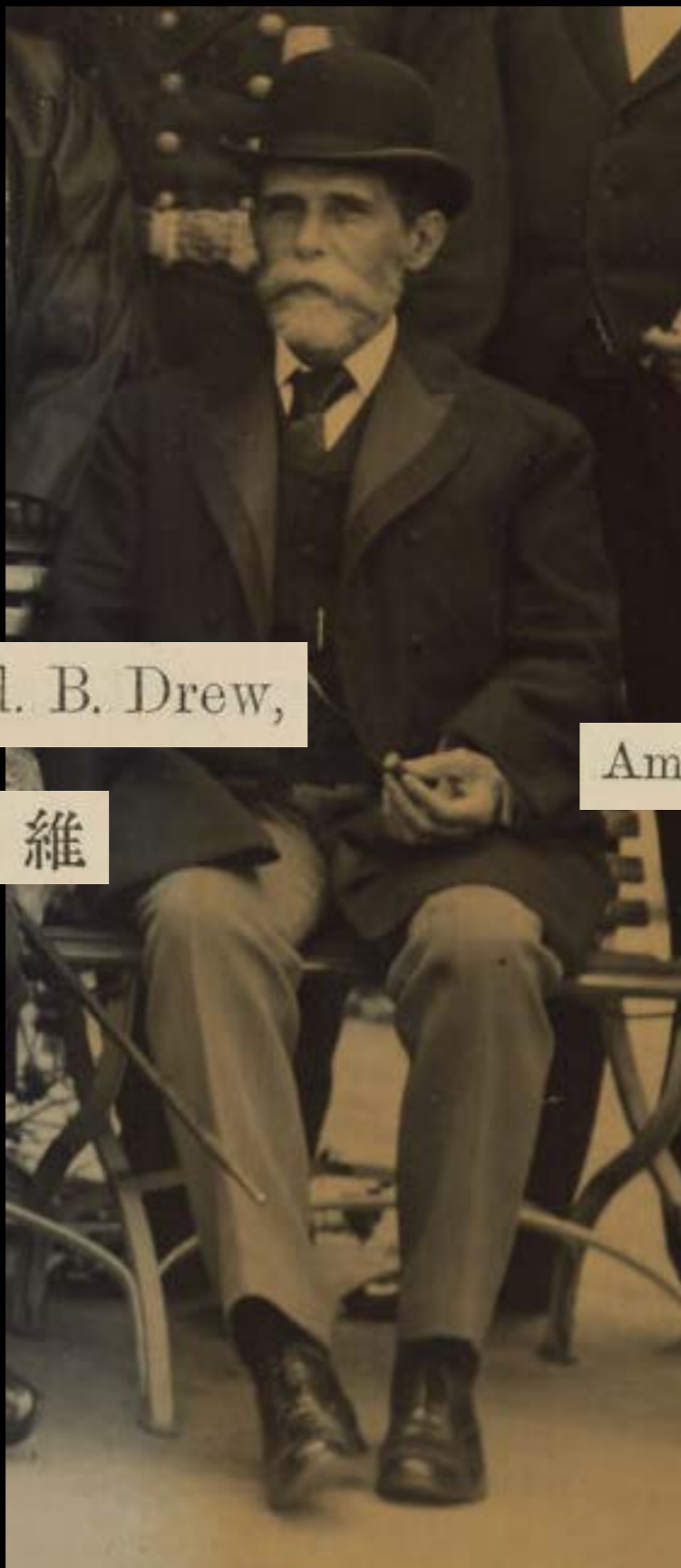
徐紹楨

Hsu Hsiao-cheng
James Hsu

Li Hsing-ju

李興銳

崇善



Edw'd. B. Drew,

American,

杜德維



COMMISSIONERS,



REVENUE DEPARTMENT.

1°.—IN-DOOR STAFF.

內班



assu

阿
嫲

阿
蘇

nanny

immigrant labour

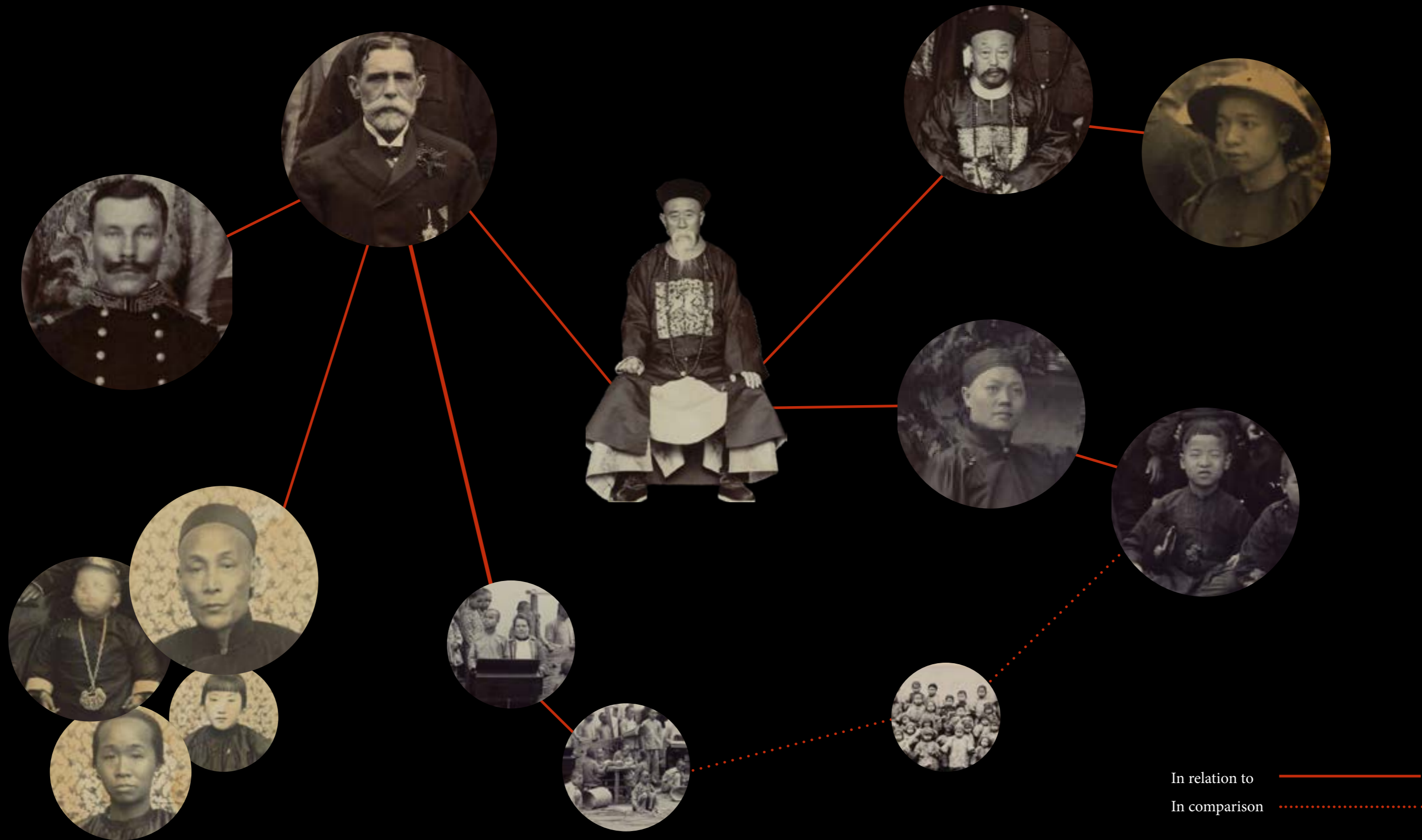
foreign trade

Assu, the Drew family's Chinese amah

Description: Edward Bangs Drew family amah (domestic servant), Assu, who came with the family when Drew retired from the Chinese Maritime Customs Service and returned to the U.S.

China
1891

Classes & Races



“photography during colonial rule imaged the
world in order to study, profit from and own it.”
Teju Cole (2019)



Experience the Orient
as your own.



Maritime Real Estate

We are a full-service real estate broker, serving all the Imperial Maritime Custom Service commissioners, officers and all western residents in China. Incepted in 1854, with just five offices, we serve clients from more than 20 cities nationwide



Office Locations

Canton	Ningbo	Fuchoow
Amoy	Shanghai	



Hill House

Eight-bedroom detached house, Westerners only, first come first served
6,048 SQ FT | picture perfect and on a beautiful hill



Castle House

Ten-bedroom detached house, Westerners only, first come first served
8,348 SQ FT | Traditional castle family home in a tranquil location

Celebrate life and all experiences with your loved ones.



Adventure

Dus autem fugiam inis alit
perum re, que asimili quate-
cus. Optibusaped maximus,
sunt illandi omnis eni con
pedit, auta quidundae dis-
que repernatemo eatatum
rempos estius por aut dit ut
modipsam que vendi comnis



Arts and Culture

Dus autem fugiam inis alit
perum re, que asimili quate-
cus. Optibusaped maximus,
sunt illandi omnis eni con
pedit, auta quidundae dis-
que repernatemo eatatum
rempos estius por aut dit ut
modipsam que vendi comnis



Wedding

Dus autem fugiam inis alit
perum re, que asimili quate-
cus. Optibusaped maximus,
sunt illandi omnis eni con
pedit, auta quidundae dis-
que repernatemo eatatum
rempos estius por aut dit ut
modipsam que vendi comnis